

CENTRAL CITY COMMUNITY SCHOOL DISTRICT: REPORT TO COMMUNITY

CENTRAL CITY'S VISION STATEMENT
LEARNING TODAY, LEADING TOMORROW.

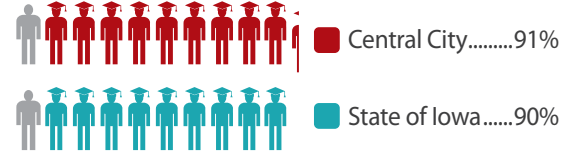
CENTRAL CITY'S MISSION STATEMENT

To graduate all students with high levels of academic and personal achievement, ready for post-secondary excellence through research-based instruction and a collaborative system of support.

2014/2015 AVERAGE DAILY ATTENDANCE



2014/2015 GRADUATION RATE



2014-2015

2014-2015 MEASURES OF ACADEMIC PROGRESS (MAP) LOCAL MEAN VS NATIONAL NORM MEAN

	Math	Reading	Science
K	2.3*	1.3*	
1	4*	6.5*	
2	5.3*	.7*	
3	1.5*	5.1*	
4	-2.5*	4.7*	
5	-.9*	3.4*	.7*
6	-1.4*	3.2*	-1.2*
7	-.9*	5.3*	0
8	2.7*	4.7*	1.6*
9	-2.7*	4.3*	na
10	5*	2.4*	na
11	8.5*	na	na

2014-2015 MEASURES OF ACADEMIC PROGRESS (MAP) ON AVERAGE IS A YEAR OF GROWTH MET?

	Math	Reading	Science
K	no	no	
1	yes	yes	
2	no	no	
3	yes	yes	
4	yes	yes	
5	no	no	no
6	yes	yes	no
7	no	yes	yes
8	no	yes	yes
9	no	yes	na
10	no	yes	na

2014-2015 GRADUATE INTENTIONS

No. of Graduates surveyed
20

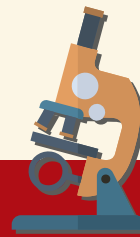


Central City's annual **READING** goal was to increase the percentage of proficient juniors from 84% as measured by the IA Assessments.

Central City met this goal. The percentage of juniors proficient in reading increased from 84% to 90%.

2014-2015 IA ASSESSMENT READING PROFICIENCY

Grade	Central City	GWAEA	Iowa
GRADE 3-6	76.55%	77.00%	76.25%
GRADE 7-8	71.35%	76.05%	75.70%
GRADE 9-11	87.87%	83.90%	82.75%



Central City's annual **SCIENCE** goal was to increase the percentage of proficient 6th graders from 60% as measured by the IA Assessments.

Central City met this goal. The percentage of 6th graders proficient in science increased from 60% to 81%.

2014-2015 IA ASSESSMENT SCIENCE PROFICIENCY

Grade	Central City	GWAEA	Iowa
GRADE 3-6	85.70%	79.85%	81.55%
GRADE 7-8	76.55%	81.30%	164.30%
GRADE 9-11	84.00%	81.93%	80.20%



Central City's annual **MATH** goal was to increase the percentage of proficient 7th graders from 77% as measured by the IA Assessments.

Central City met this goal. The percentage of 7th graders proficient in math increased from 77% to 77.4%.

2014-2015 IA ASSESSMENT MATH PROFICIENCY

Grade	Central City	GWAEA	Iowa
GRADE 3-6	79.20%	79.18%	78.35%
GRADE 7-8	76.20%	79.50%	79.65%
GRADE 9-11	85.10%	82.77%	81.43%

2014-2015 CERTIFIED ENROLLMENT

Certified Enrollment
499

Open Enrollment out of District
86

Open Enrollment into District
33

51% MALE

49% FEMALE

9% CHILDREN WITH IEPs

DEMOGRAPHICS

13% CHILDREN ENROLLED IN TAG

28% ELIGIBLE FOR FREE/REDUCED LUNCH PROGRAM

93.6%

WHITE

1%

ASIAN

1.4%

BLACK

1.4%

HISPANIC

2%

MULTI-RACE

.41%

NATIVE AMERICAN

0%

PACIFIC ISLANDER